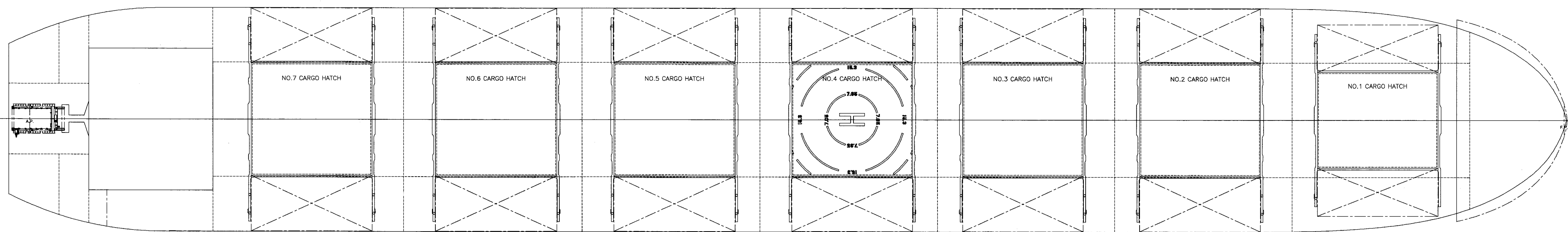
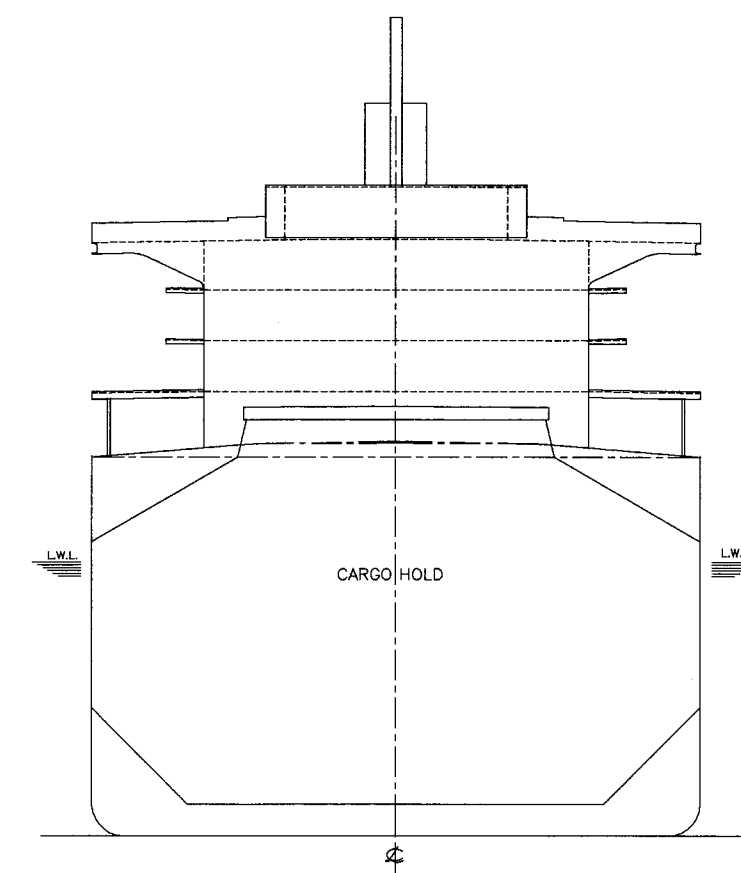
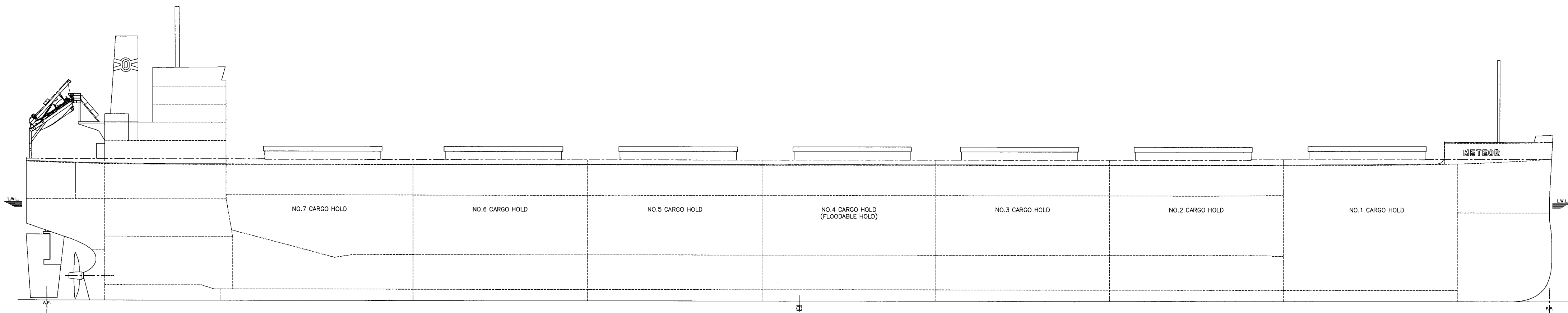


# M.V. " METEOR " CAPACITY PLAN



CARGO HOLD									
ITEM	LOCATION FR. No.	GRAIN CAPACITY (m <sup>3</sup> )			BALE CAPACITY (m <sup>3</sup> )			CENTER OF GRAVITY (m)	
		HOLD	HATCH	TOTAL	HOLD	HATCH	TOTAL	KG	K G
No. 1 CARGO HOLD	194 - 221	11,576	294	11,870	11,499	294	11,793	-83.28	11.43
No. 2 CARGO HOLD	167 - 194	13,719	352	14,071	13,412	352	13,764	-88.07	11.30
No. 3 CARGO HOLD	140 - 167	13,743	352	14,095	13,445	352	13,797	-32.41	11.30
No. 4 CARGO HOLD	113 - 140	12,925	352	13,277	12,592	352	12,944	-7.34	11.39
No. 5 CARGO HOLD	86 - 113	13,742	352	14,094	13,445	352	13,797	17.76	11.30
No. 6 CARGO HOLD	59 - 86	13,723	352	14,075	13,418	352	13,770	43.42	11.30
No. 7 CARGO HOLD	30 - 59	14,336	352	14,688	14,027	352	14,379	69.81	11.52
TOTAL		93,764	2,406	96,170	91,838	2,406	94,244	-	-

WATER BALLAST TANK							DENSITY = 1.025	
ITEM	LOCATION FR. No.	VOLUME (m <sup>3</sup> )	WEIGHT (MT)	CENTER OF GRAVITY (m)		MAX. F.S.I. MOMENT (m <sup>4</sup> )		
				KG	K G			
FORE PEAK TANK	221 - F.E.	1,948.6	1,997	-101.84	7.09	3,292		
No. 1 WATER BALLAST TANK (P)	194 - 221	1,809.5	1,855	-83.60	8.45	6,244		
No. 1 WATER BALLAST TANK (S)	194 - 221	1,809.5	1,855	-83.60	8.45	6,244		
No. 2/3 WATER BALLAST TANK (P)	140 - 194	2,972.2	3,047	-45.72	7.34	17,861		
No. 2/3 WATER BALLAST TANK (S)	140 - 194	2,972.2	3,047	-45.72	7.34	17,862		
No. 4 WATER BALLAST TANK (P)	113 - 140	1,496.1	1,523	-7.33	7.35	8,941		
No. 4 WATER BALLAST TANK (S)	113 - 140	1,497.6	1,525	-7.32	7.35	8,947		
No. 5/6 WATER BALLAST TANK (P)	59 - 113	2,682.8	2,750	29.70	8.05	12,391		
No. 5/6 WATER BALLAST TANK (S)	59 - 113	2,683.4	2,750	29.70	8.05	12,402		
No. 7 WATER BALLAST TANK (P)	30 - 59	1,283.7	1,316	71.07	9.49	1,887		
No. 7 WATER BALLAST TANK (S)	30 - 59	1,283.7	1,316	71.07	9.49	1,887		
AFT PEAK TANK	A.E. - 10	2,033.9	2,085	107.88	13.87	17,745		
SUM		24,453.2	25,066	-	-	-		
No. 4 CARGO HOLD (F.B.)	113 - 140	13,277.0	13,609	-7.34	11.39	68,617		
TOTAL		37,730.2	38,675	-	-	-		

FUEL OIL TANK								DENSITY = 0.980	
ITEM	LOCATION FR. No.	VOLUME (m <sup>3</sup> )		WEIGHT (MT)	CENTER OF GRAVITY (m)		MAX. F.S.I. MOMENT (m <sup>4</sup> )		
		100% FULL	96% FULL		KG	K G			
No. 1 FUEL OIL TANK (C)	59 - 86	580.0	556.8	546	43.93	0.85	5,401		
No. 2 FUEL OIL TANK (C)	29 - 59	511.5	491.0	481	68.48	0.85	3,902		
No. 3 FUEL OIL TANK (P)	20 - 31 *	734.7	705.3	691	88.55	12.87	168		
No. 3 FUEL OIL TANK (S)	15 - 31 *	775.1	744.1	729	88.90	12.62	190		
SUM		2,601.3	2,497.2	2,447	-	-	-		
H.F.O. SETT. TANK (S)	22 <sup>5/8</sup> - 25 *	18.5	17.8	17	89.95	17.19	3		
H.F.O. SERV. TANK (S)	25 - 27 <sup>1/2</sup> *	19.0	18.2	18	87.75	17.24	3		
SUM		37.5	36.0	35	-	-	-		
TOTAL		2,638.8	2,533.2	2,482	-	-	-		

DIESEL OIL TANK								DENSITY = 0.880	
ITEM	LOCATION FR. No.	VOLUME (m <sup>3</sup> )		WEIGHT (MT)	CENTER OF GRAVITY (m)		MAX. F.S.I. MOMENT (m <sup>4</sup> )		
		100% FULL	96% FULL		KG	K G			
DIESEL OIL TANK (S)	15 - 20 *	256.1	245.9	216	95.57	14.68	71		
D.O. SERV. TANK (S)	20 - 21 <sup>2/2</sup> *	16.8	16.1	14	92.60	17.08	4		
TOTAL		272.9	262.0	230	-	-	-		

NOTE: 1. THE FIGURES OF CUBIC BALE CAPACITY INCLUDE THE CAPACITY OF BULKHEAD CORRUGATION SPACE.  
 2. TANK CAPACITY MARKED \* INDICATES UP TO THE OVERFLOW PIPE LINE.  
 3. SIGN FOR DISTANCE TO BE AS FOLLOWS.  
 (-) SIGN: FORWARD FROM MIDSHIP  
 NO SIGN: AFT FROM MIDSHIP